

Champion Gasket

Style 55

EXTREME PERFORMANCE COMPRESSED FIBRE GASKET



High grade fibre with premium grade of fillers and binders

Champion Style 55 Universal Gasket is a premium grade high temperature, pressure resistance compressed fiber jointing sheet manufactured with a proprietary formulation of premium quality raw materials.

Champion Style 55 Universal Gasket is available in non-metallic and also in metallic option i.e with **SS wire reinforced gauze** insertion (min 18 mesh x 30 gauge) and supplied with smooth anti stick Graphite finish on the top. This grade is produced in dark grey / black color.

Applications: Champion Style 55 Universal Gasket has can be used as extreme performance jointing sheet over rapidly changing operating conditions of pressure, where vibrations are experienced, flange of the gasket joint is narrow.

Preferred as gasket of choice for boiler applications, air compressors, cylinder head gaskets, internal combustion engines.

Typical Physical Properties:

Description	Standard Specs	Typical Values
Density	DIN 28090-2	2.0-2.2 g/cm ³
Tensile Strength	IS 2712:1998	≥33 MPa /330 Bar (4786 psi)
Compressibility	ASTM F 36	7% to 11%
Stress Relaxation	@40 MPa16 hr/300°C-IS 6210	≥32 MPa /320 Bar (4640 psi)
Gas Permeability	BS 7531	<0.5 cc/min
Recovery	ASTM F 36	≥50%
Ignition Loss	DIN 52911	≤23%



CHAMPION SEALS INDIA PRIVATE LIMITED SEALANT & GASKET INDIA PRIVATE LIMITED

Champion House, 15 Parsi Panchayat Road, Andheri (East), Mumbai – 400069. India
 Product Inquiry : info@championseals.in
 Customer Care Number: +91 98201 71162
 Website : www.championseals.in



TEMPERATURE

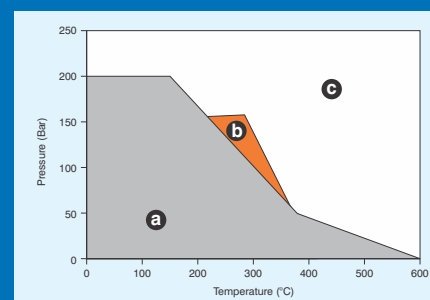
Maximum Continuous Service Temperature:
600°C / 1112°F



PRESSURE

Maximum Pressure:
 20 MPa / 200 Bar (2900 psi)
 - Non Metallic
 22.5 MPa / 225 Bar (3260 psi)
 - Metallic

CHAMPION STYLE 55 EXTREME PERFORMANCE PRESSURE / TEMPERATURE LIMITS



Guidelines for application:

- Suitable subject to chemical compatibility.
- Suitable for short term temperature fluctuation or non critical application.
- For extreme service conditions, kindly consult Champion Technical Support.

APPROVALS / COMPLIANCE

Compliance with
 IS 2712- 1998 W/1 & O/1,
 DGS & DG/MISC/81-C
 BS 2815-1973 Grade A

*Kindly consult Champion Technical Support for all critical applications.

**Available only in 1600 X 4000 / 1600 X 2000 mm